



40 COURT STREET, SUITE 200 BOSTON, MA 02108 TEL 617-367-2000 FAX 617-367-0315

DECISION AID PORTFOLIO UPDATE

Shared Decision Making programs are based on unbiased medical evidence researched and evaluated by FIMDM. These programs are regularly reviewed to ensure they contain the most current and accurate information, and each program is updated as necessary.

PROGRAM REVISIONS COMPLETED (by November 2004)

- Early Stage Breast Cancer: Choosing Your Surgery (*June 2004*)
- Treatment Choices for Low Back Pain: Spinal Stenosis (October 2004)
- Treatment Choices for Low Back Pain: Herniated Disc (October 2004)

PROGRAM REVISIONS IN PROGRESS

- Benign Prostatic Hyperplasia (BPH): Choosing Your Treatment (*due Winter 2004*)
- Treatment Choices for Coronary Artery Disease (*due Winter 2004*)
- Living with Coronary Artery Disease: Doing Your Part (*due Winter 2004*)

NEW PROGRAMS

- Early Breast Cancer– Hormone Therapy and Chemotherapy: Are They Right For You? (*May 2004*)
- Treatment Choices for Hip Osteoarthritis (October 2004)

OTHER CURRENT PROGRAMS

Breast Cancer:

- Breast Cancer- Ductal Carcinoma in Situ (DCIS): Choosing Your Treatment
- Breast Reconstruction: Is it Right For You?

Orthopedics:

- Chronic Low Back Pain: Managing Your Pain and Your Life
- Treatment Choices for Osteoarthritis of the Knee

Reproductive:

- Ovarian Cancer–Reducing Your Risk

Prostate:

- Treatment Choices for Prostate Cancer
- Is a PSA Test Right for You?

(continued on page 2)

INSIDE THIS ISSUE:

Shared Decision Making Program Portfolio Update	1-2
Awards	2
Annual Meeting in Jackson Hole	3
Health Affairs	4-5
FIMDM Expands	6
FIMDM Staff News	6



“If I had to choose between a treatment or the Grand Canyon, I would go to the Grand Canyon. So many years I've wanted to go to see the Grand Canyon, I've never gotten there and I would definitely go see the Grand Canyon.”

- Patient from

“Living With Metastatic Breast Cancer” Program

PORTFOLIO UPDATE cont.....

General:

Peace of Mind: Personal Stories About Advance Directives

Informed Healthcare Consumer

PROGRAMS UNDER DEVELOPMENT:

Spanish Version of PSA Test (December 2004)

Colon Cancer Screening: Deciding What's Right for You (Due January 2005)

Living With Metastatic Breast Cancer (Due January 2005)

Managing Menopause (Due Spring 2005)

Depression (Due Summer 2005)

AWARDS

John Eisenberg Award

Hilary Llewellyn-Thomas and Annette O'Connor won the Society for Medical Decision Making John Eisenberg Award in Recognition of Exemplary Leadership in the Practical Application of Medical Decision Making Research. This award recognizes individuals who have demonstrated sustained leadership in translating medical decision making research into practice, and who have taken exceptional steps to communicate the principles and/or substantive findings of medical decision making research to policy makers, to clinical decision makers, and to the general public.

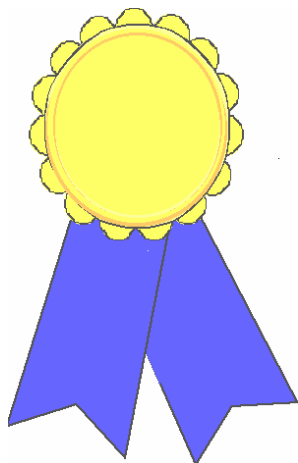
Accolades for The Center for Shared Decision Making at Dartmouth

The Center for Shared Decision Making at Dartmouth was recently selected to be in the first group of those honored as Consumer Leadership Innovators by FAACT, the Foundation for Accountability. This national organization has the goal of improving health care for Americans by advocating for an accountable and accessible system where consumers are partners in their care and help shape the delivery of care.

Program Awards

Please join us in congratulating Karen Sepucha, Sherry Reisner, Lauren Vitali and all of our collaborators for their excellent work on the DCIS program. Karen, Sherry and Lauren were recognized by the American Medical Writers Association for excellence in medical communication, taking home their top honor, the "Neil Duane Award for Distinction" as well as the "Will Solimene Award for Excellence".

In addition, Health Dialog earned awards for two of its educational healthcare videos, "Breast Reconstruction: Is it Right for You?" and "Chronic Low Back Pain: Managing Your Pain and Your Life" at the 11th Annual National Health Information Awards (NHIA). These awards are given by the Health Information Resource Center (www.health.gov/nhic/). This is a national private sector clearinghouse for consumer health information programs and materials that recognizes the nation's best consumer health information programs. The videos were selected from a highly competitive field that included more than 1,100 submissions. The submissions, judged by a panel of health information experts, were ranked on content, format, success in reaching the target audience, and overall quality.



Hilary Llewellyn-Thomas and Annette O'Connor won the John Eisenberg Award in Recognition of Exemplary Leadership in the Practical Application of Medical Decision Making Research.



ANNUAL MEETING IN JACKSON HOLE, WY

This past summer, FIMDM held its first Annual Meeting in Jackson Hole, WY. From July 25th–July 27th, our Medical Editors and other Friends of the Foundation gathered to meet formally and informally, and share ideas about how to achieve our mutual goals. Topics that were covered during this time included:

Identifying the Populations that are Candidates for Decision Making Support

David Wennberg, President and Chief Operating Officer, Health Dialog Data Services

Implementing Shared Decision Making in a Health Coaching Program

Tamara Hall, Senior Vice President of Operations, Health Dialog

Measuring and Improving Quality of Decision Support Provided by Health Coaches

Annette O'Connor, Senior Scientist, Ottawa Health Research Institute, University of Ottawa

Practice Variation and the Need for FIMDM

Jack Wennberg, Director, Center for Evaluative Clinical Sciences, Dartmouth Medical School

Where is the Wisdom in Health Care?

Al Mulley, Chief, General Internal Medicine, Director of the Medical Practices Evaluation Center, Massachusetts General Hospital

Ethics, Conflict of Interest and Credibility

Chaired by Michael Barry, Chief, General Internal Medicine, Massachusetts General Hospital

The October 7 Web edition of *Health Affairs*, funded by the WellPoint Foundation, features 20 articles and analyses on medical practice variation by some of the nation's leading health care experts, including John E. Wennberg, MD, MPH, who directs the Center for the Evaluative Clinical Sciences at Dartmouth Medical School in Hanover, NH and who is a founder of the Foundation for Informed Medical Decision Making. The studies were released at a Washington, DC briefing, sponsored by The Robert Wood Johnson Foundation, which funds the *Dartmouth Atlas of Health Care* project.

Dr. Wennberg, the principal investigator and series editor of the *Dartmouth Atlas*, has documented significant geographic variations in medical practice since the early 1970s.

The studies prove that “no matter how preeminent the institution, the care varies all over the ballpark,” Dr. Wennberg says. “It is clear that quality is inversely correlated with the intensity of care and that the better hospitals are using fewer resources and providing fewer hospitalizations and physician visits.”

Dr. Wennberg's work was one of the major impetuses for the creation of the Foundation. Unwarranted variation, in Dr. Wennberg's terminology, is variation in medical care driven by the views of physicians and the resources available in an area, rather than the needs and preferences of the patients. The mission of the Foundation is to have all patients fully informed and involved when important medical decisions are made. While all of the papers in the issue are likely to be of interest, the papers by Sepucha et al. and O'Connor et al. in particular lay out the relationships among quality of care, variation in care, and informed medical decision making.

The following are some of the topics included in the Health Affairs Edition:

Use Of Medicare Claims Data To Monitor Provider-Specific Performance Among Patients With Severe Chronic Illness

John E. Wennberg, Elliott S. Fisher, Therese A. Stukel, and Sandra M. Sharp

Variations In The Longitudinal Efficiency Of Academic Medical Centers

Elliott S. Fisher, David E. Wennberg, Therese A. Stukel, and Daniel J. Gottlieb

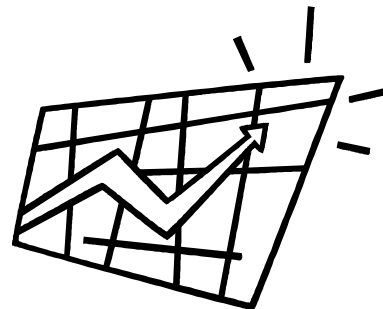
Who You Are And Where You Live: How Race And Geography Affect The Treatment Of Medicare Beneficiaries

Katherine Baicker, Amitabh Chandra, Jonathan S. Skinner, and John E. Wennberg

Regional Availability Of High-Volume Hospitals For Major Surgery

Justin B. Dimick, Samuel R.G. Finlayson, and John D. Birkmeyer





Modifying Unwarranted Variations In Health Care: Shared Decision Making Using Patient Decision Aids

Annette M. O'Connor, Hilary A. Llewellyn-Thomas, and Ann Barry Flood

Wrestling With Variation: An Interview With Jack Wennberg

Fitzhugh Mullan

Trends: Trends And Geographic Variations In Major Surgery For Degenerative Diseases Of The Hip, Knee, And Spine

James N. Weinstein, Kristen K. Bronner, Tamara Shawver Morgan, and John E. Wennberg

Perspective: The Dartmouth Data: Moving From Analysis To Action

James R. Knickman

Perspective: Decisions, Decisions: Why The Quality Of Medical Decisions Matters

David Blumenthal

Perspective: Promoting The Dissemination Of Decision Aids: An Odyssey In A Dysfunctional Health Care Financing System

John Billings

Perspective: Moving Toward A More Patient-Centered Health Care Delivery System

Judith H. Hibbard

Perspective: Quality As A System Property: Section 646 Of The Medicare Modernization Act

Paul Harrington

Perspective: Practice Variations And Health Care Reform: Connecting The Dots

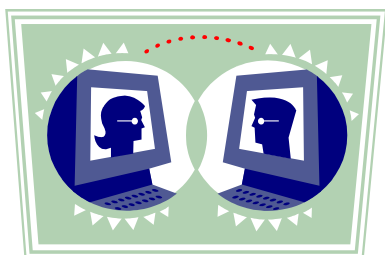
John E. Wennberg

40 Court St.
Boston, MA 02108

Phone: 617-367-2000
Fax: 617-367-0315
Web: www.fimdm.org

FIMDM STAFF NEWS

FIMDM has expanded! We now occupy the whole 2nd floor of 40 Court Street. We have obtained 6 new offices, more storage space, a place for a video library and viewing area, and a large conference room complete with videoconferencing capabilities. This expansion has benefited us in several ways: more room for visiting clinicians and staff expansion, more rooms to conduct focus groups or patient interviews, and more options for conducting meetings when an in-person meeting is not convenient.



Molly Beinfeld, MPH joined us as a research associate in August 2004. She gathers, evaluates, and summarizes current medical research in support of new or revised Shared Decision Making programs. She has a BA in Psychology and Biology from Cornell University and a Masters in Public Health from Boston University. Before joining the Foundation, Ms. Beinfeld worked as an analyst for the Boston Public Health Commission and as a Research Scientist at the Institute for Technology Assessment at Massachusetts General Hospital. Welcome!

We are thrilled to announce the arrival of the newest member of the Sepucha clan, Amy Elizabeth Sepucha, who was born June 18th, 2004. Congratulations Karen!

Shannon Bagley left the Foundation in November to get married and to move to New York. **Chris Fisler** will take over Shannon's position as Business Manager. Chris comes to the Foundation with many years of experience in both finance and operations. In recent years, she worked as a Controller for Dalbar Inc, a financial services research firm, and as Director of Finance and Operations for Stackpole and Partners, an advertising agency.

Nancy Briton, PhD has joined the Foundation as the new Director of Research. She has experience with a wide range of research in health policy and the psychosocial aspects of health and disease.

She earned a doctorate in social psychology from Northeastern University in 1996. Before joining the staff, she held a faculty appointment at Harvard School of Public Health and taught courses in statistics, psychology, and communication. Welcome Nancy!

The primary mission of the Foundation for Informed Medical Decision Making is to strengthen the role patients play in selecting treatments for their medical conditions. Medical research on practice variation indicates that patient preferences are often less important in treatment decision than factors having little to do with patients or their illnesses, such as geography, economics or supplier-induced demands. We achieve our mission via the following objectives:

- *Provide patients with the perspectives and information they need when they face decisions about medical testing and treatment.*
- *Improve the quality of decisions patients make in collaboration with their physicians*
- *Foster research to learn how best to help patients who face health care decisions.*

In a complex medical environment, where cost savings, commercial interests or professional beliefs and commitments are likely to drive medical decisions, the goal of the Foundation is to provide information that is as objective, complete and unbiased as possible. The Foundation acknowledges the right and responsibility of patients to be fully informed and to play the lead role in decisions that affect their health.